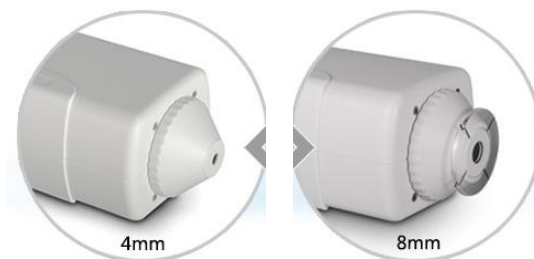


# NR100 Precision Colorimeter

NR100 is a high-cost performance handheld colorimeter, and easy to use. It is widely used in plastic, electronic, paint, ink, textile, garment, printing and dyeing, food, medical, cosmetic, industries, scientific research institutes, schools and laboratories.



With two apertures, NR100 colorimeter is suitable for most samples to check color difference. 8mm flat aperture is good used to measure large plane samples while 4mm tip aperture is used to measure small objects with concave surfaces. It is easy to use, and can meet the customer's routine testing needs.



## Product Advantages

- Built-in white plate parameters. No need to calibrate each time which realize rapid measurement;
- Double Apertures:  $\Phi 8\text{mm}$  flat aperture and  $\Phi 4\text{mm}$  tip aperture for switch, easy to measure concave sample in large plane;

- c. High stability and accuracy, good compatibility for test data compared with geometric optical structure D/8 spectrophotometer;
- d. Double locating: illuminating locating and cross locating;
- e. Equipped with rechargeable built-in high-capacity Li-ion battery. No need to purchase battery repeatedly;
- f. True color FTF 2.8 inch display, good human-computer interaction;
- g. More than 10,000 test data storage spaces;
- h. The new integral sphere design makes the measurement more stable.

### NR100 Colorimeter Technical Specifications

Model	NR100
Illuminating/Viewing Geometry	8/d(8°illumination angle/diffuse viewing); Conforms to CIE No.15,GB/T 3978.
Illumination	LED white light
Detector	Silicon photoelectric diode
Measuring Aperture	Φ8mm flat aperture; Φ4mm tip aperture
Color Space	CIE LAB
Color Difference Formula	$\Delta E^*ab$
Observer Angle	CIE 10°
Light Source	D65
Displayed Data	Chromaticity Values, Color Difference Values/Graph, PASS/FAIL Result, Color Offset
Measuring Time	1.0s
Repeatability	Standard deviation within $\Delta E^*ab$ 0.03 (Average of 30 measurements of standard white plate)
Errors Between Each Equipment	Within $\Delta E^*ab$ 4 (Average for 12 BCRA Series II color tiles)
Dimension	205×67×80 mm
Weight	500g
Power source	Rechargeable lithium-ion battery 3.7V@3200mAh
Lamp Life	TFT 2.8 inch
Interface	USB
Data Memory	100pcs standards 10000pcs samples
Operating Environment	0~40℃(32~104°F)
Storage Environment	-20~50℃(-4~122°F)
PC Software	No
Standard Accessory	Power Adapter, User Guide, Wristbands, Φ8mm flat aperture; Φ4mm tip aperture.
Optional Accessory	Micro Printer, powder test box
Notes: The specifications are subject to change without notice.	